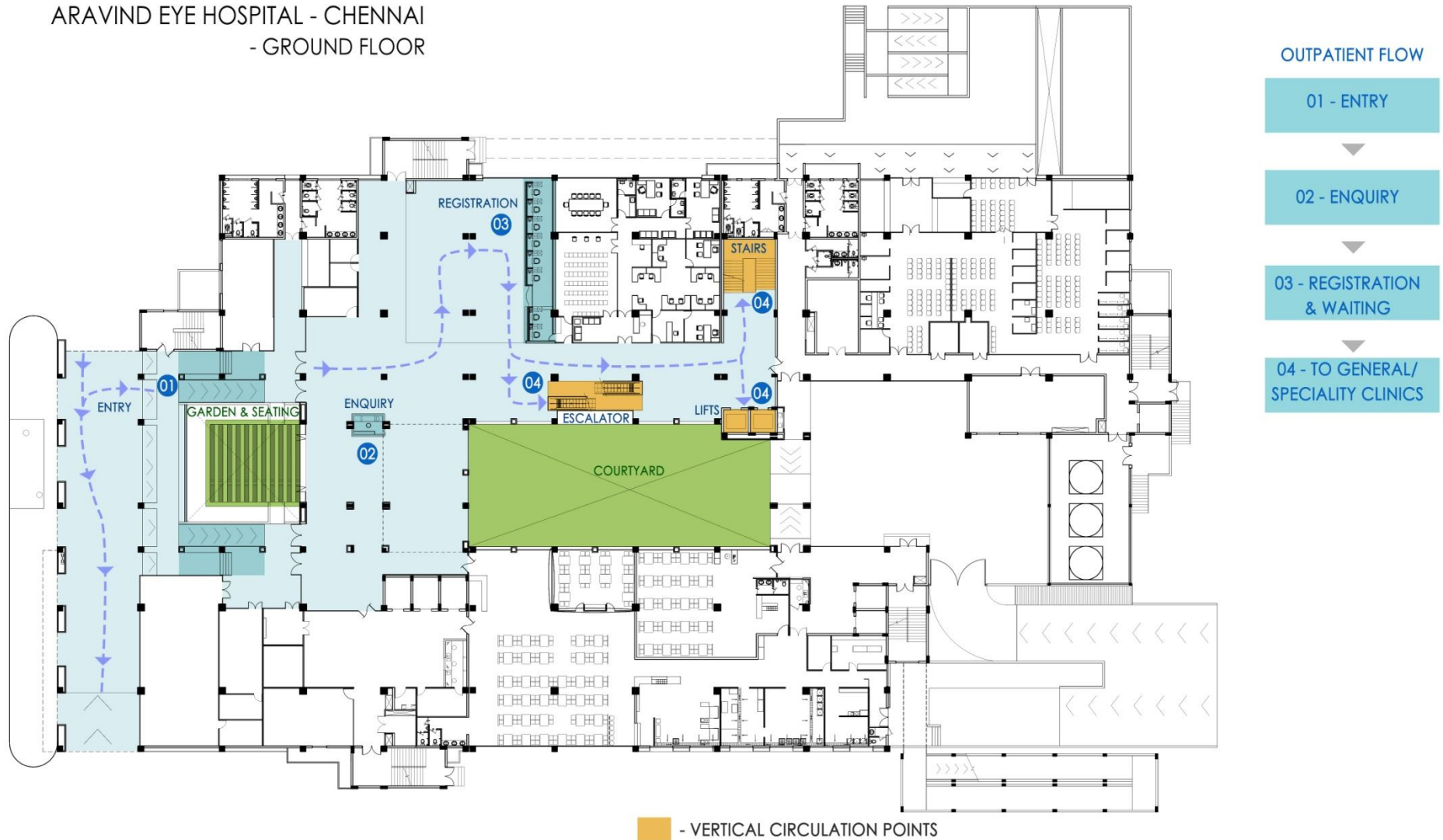


OUT PATIENT DEPARTMENT

# ARAVIND EYE HOSPITAL - CHENNAI

## - GROUND FLOOR



ARAVIND EYE HOSPITAL - CHENNAI

# ARAVIND EYE HOSPITAL - CHENNAI

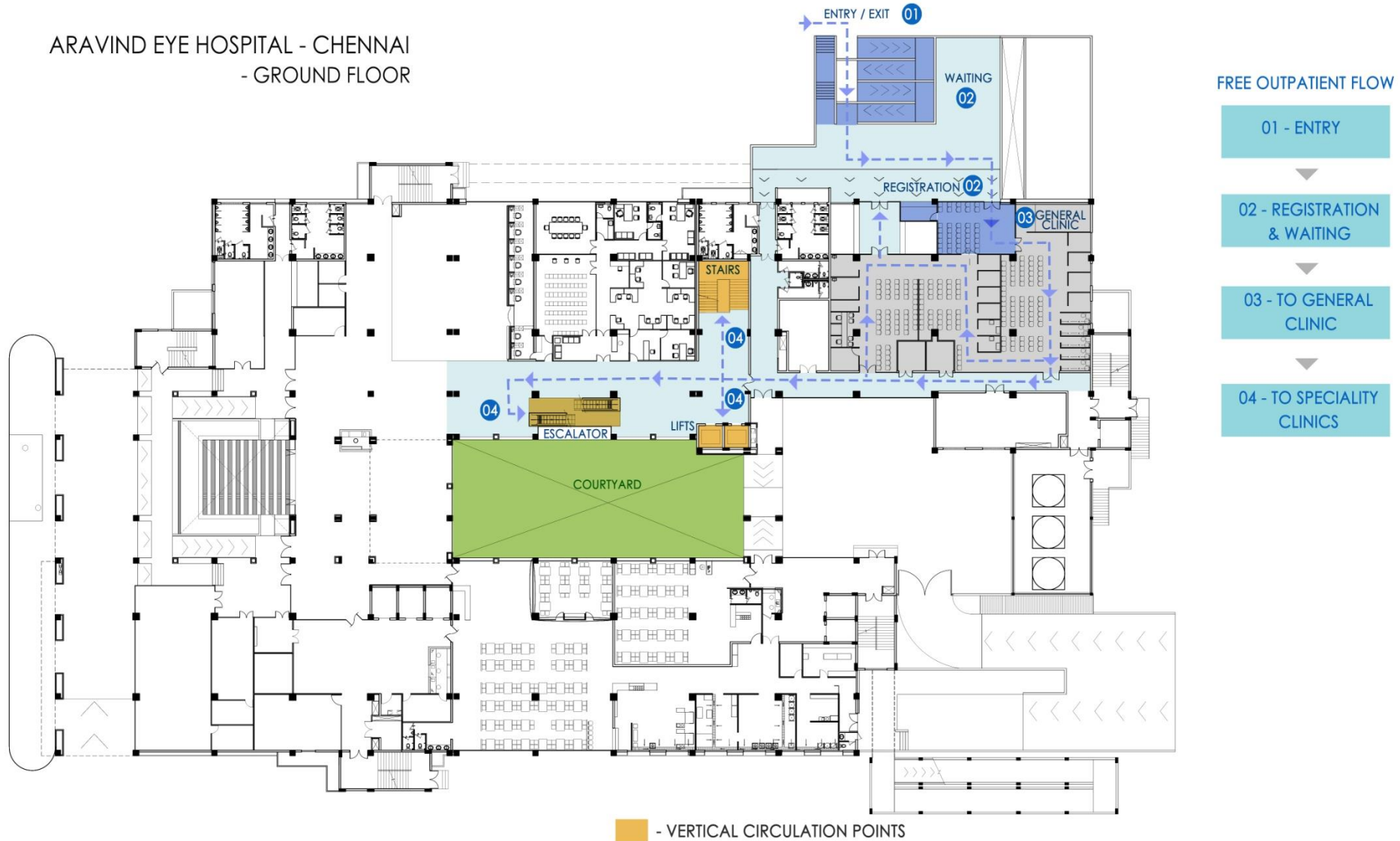
## - GROUND FLOOR



# ARAVIND EYE HOSPITAL - CHENNAI

# ARAVIND EYE HOSPITAL - CHENNAI

## - GROUND FLOOR



ARAVIND EYE HOSPITAL - CHENNAI

# ARAVIND EYE HOSPITAL - CHENNAI

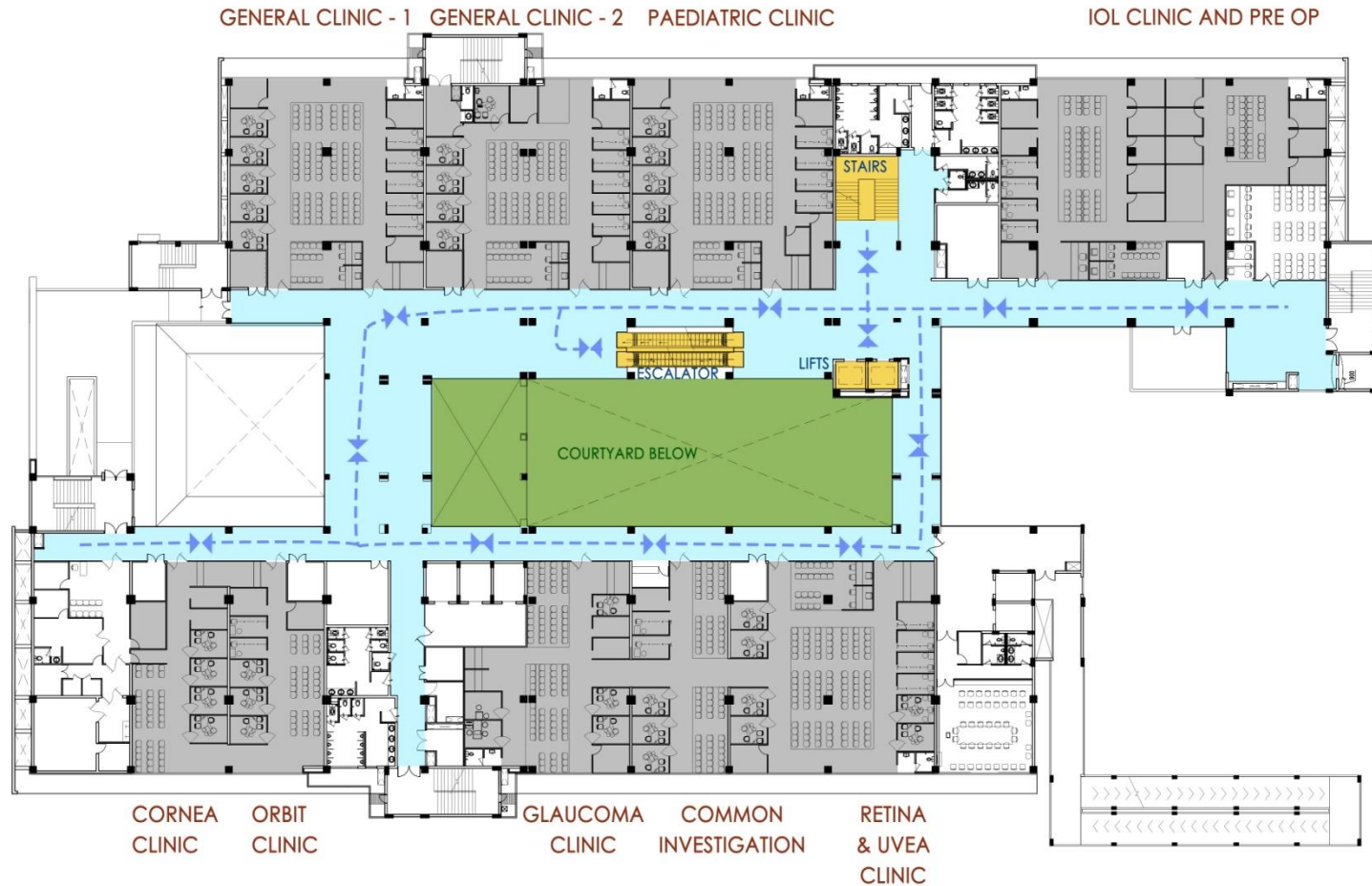
## - GROUND FLOOR



# ARAVIND EYE HOSPITAL - CHENNAI



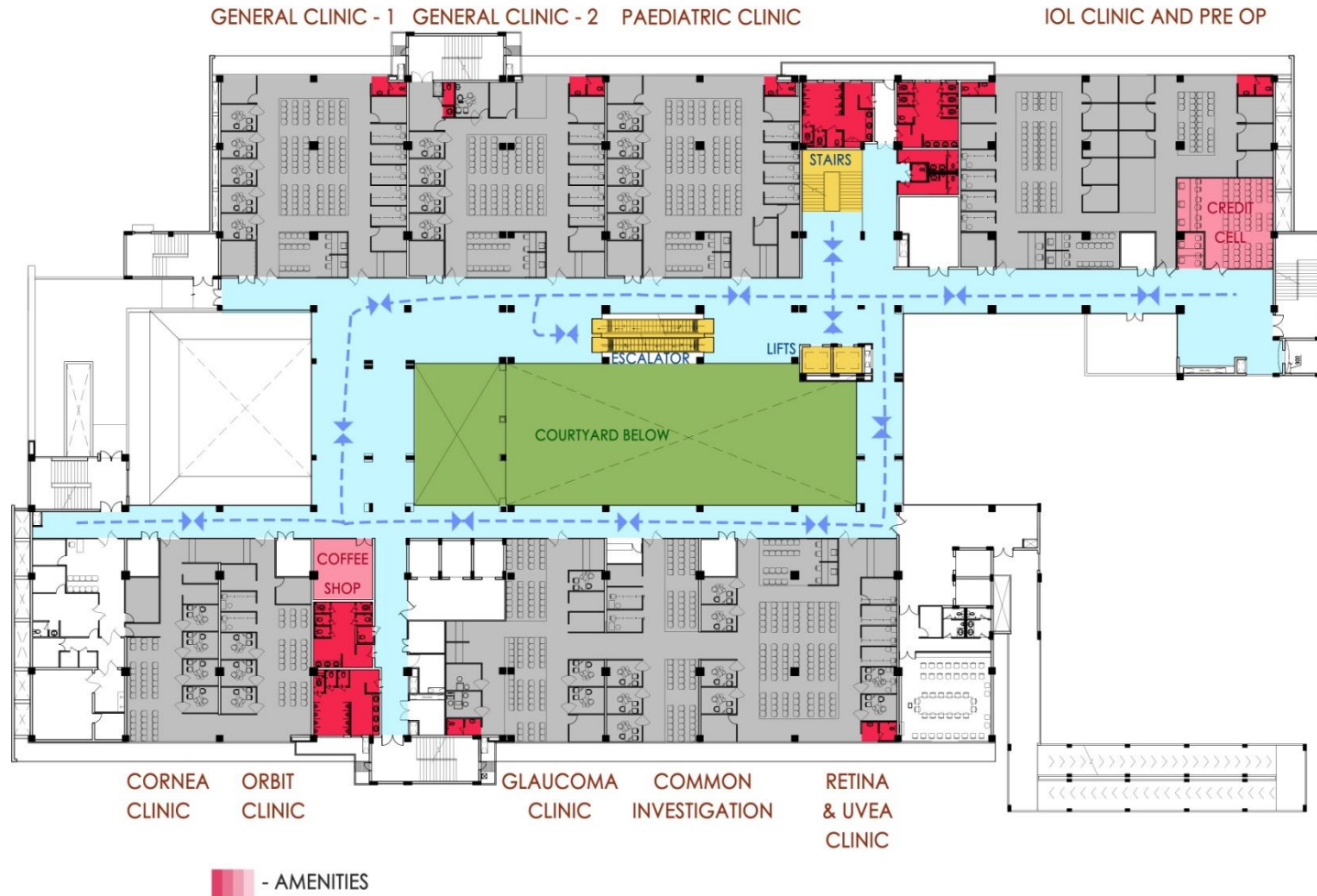
ARAVIND EYE HOSPITAL - CHENNAI  
- FIRST FLOOR



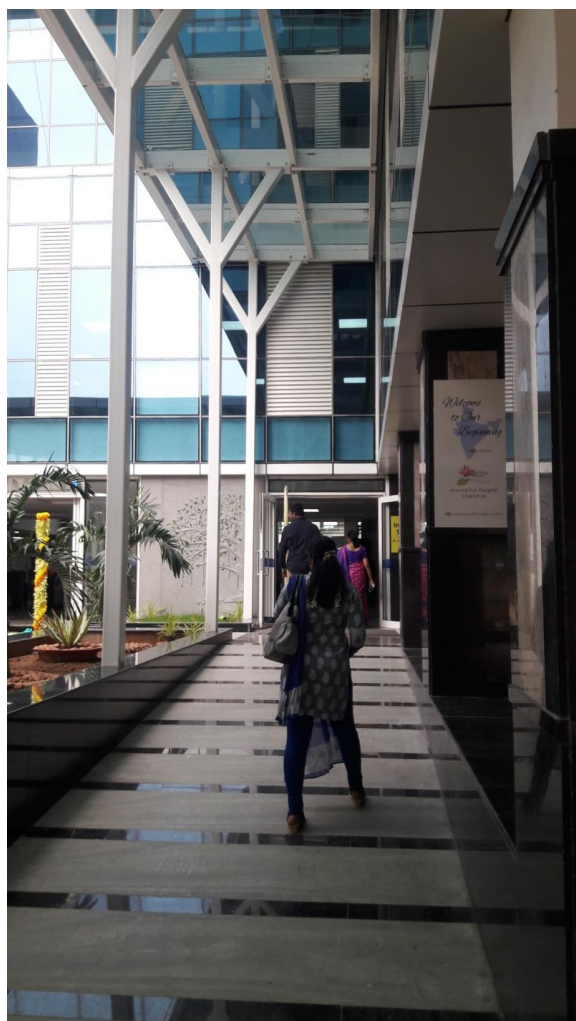
ARAVIND EYE HOSPITAL - CHENNAI

# ARAVIND EYE HOSPITAL - CHENNAI

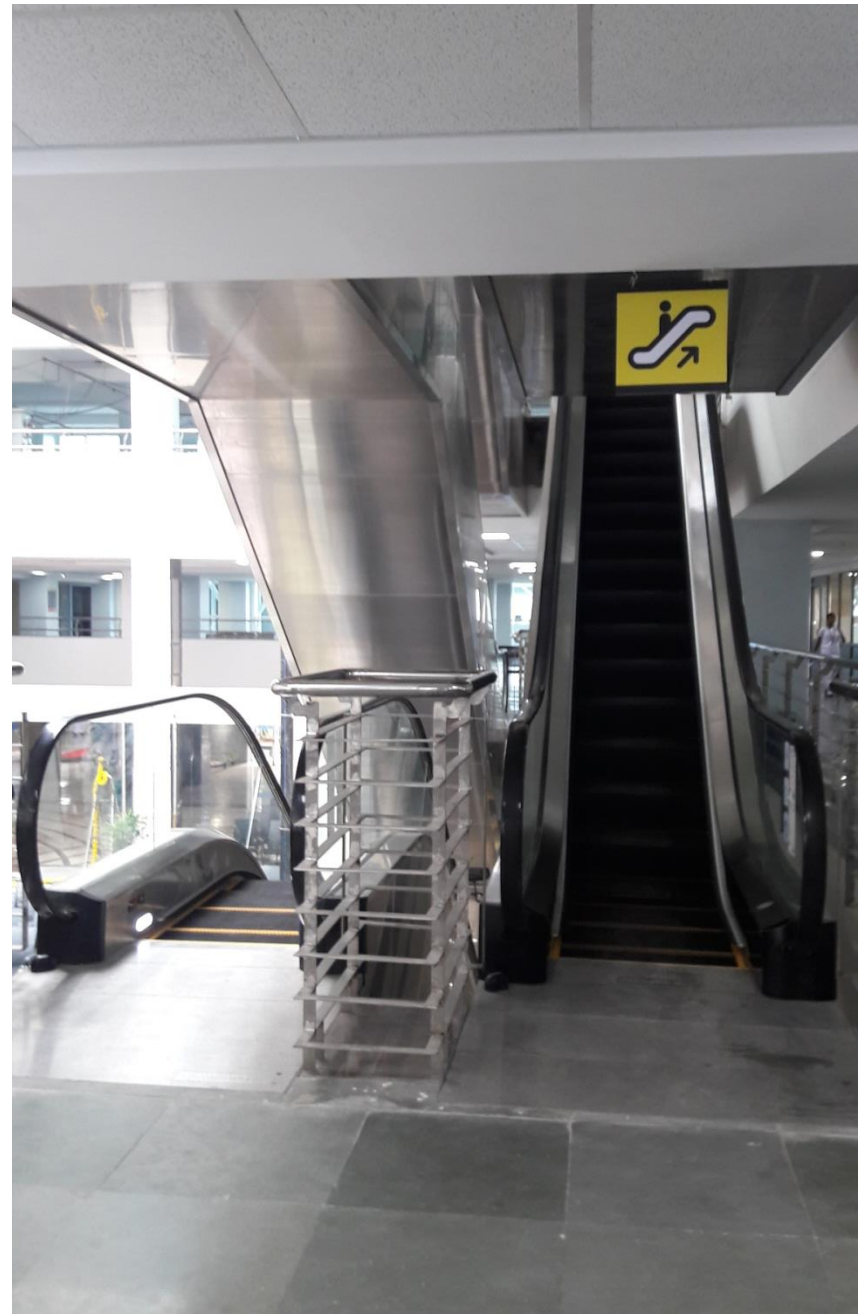
## - FIRST FLOOR



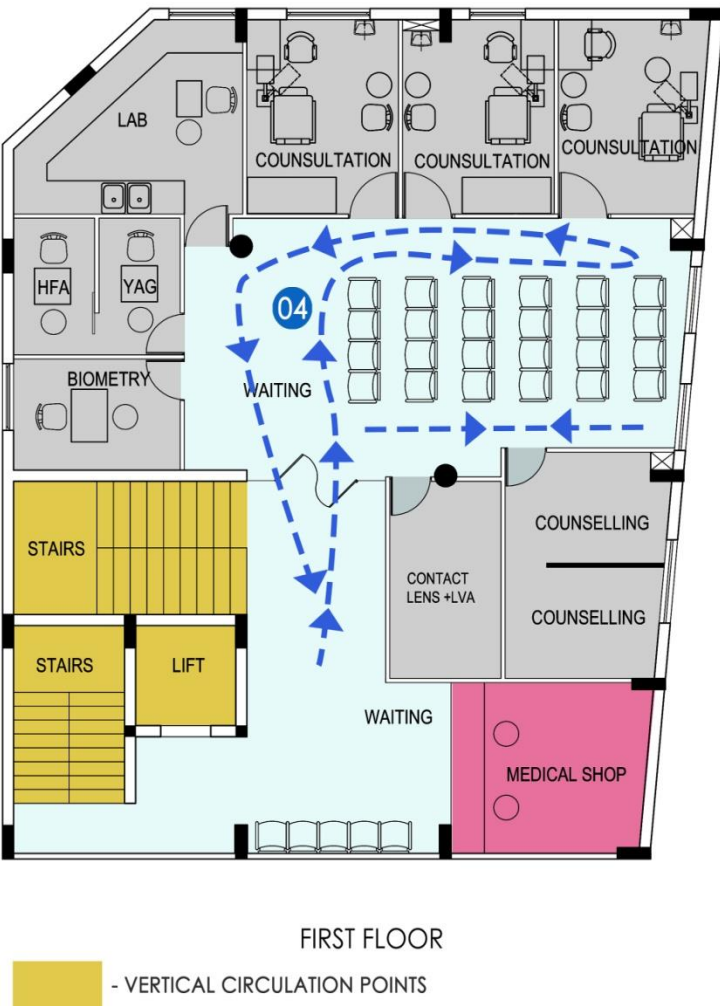
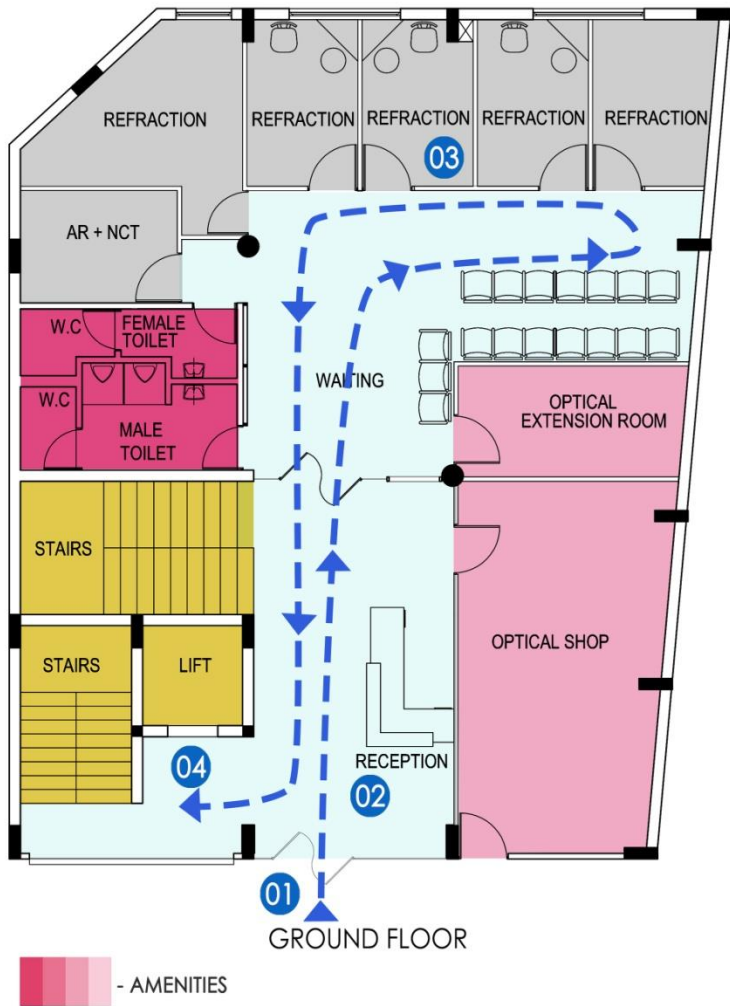
# ARAVIND EYE HOSPITAL - CHENNAI







ALSALAMA EYE HOSPITAL - KANNUR



ALSALAMA HOSPITAL - KANNUR

# SITAPUR EYE HOSPITAL - SITAPUR - GROUND FLOOR PLAN



PAEDIATRIC CLINIC & ORTHO OPTICS      CONTACT LENS & LOW VISION

SITAPUR EYE HOSPITAL - SITAPUR



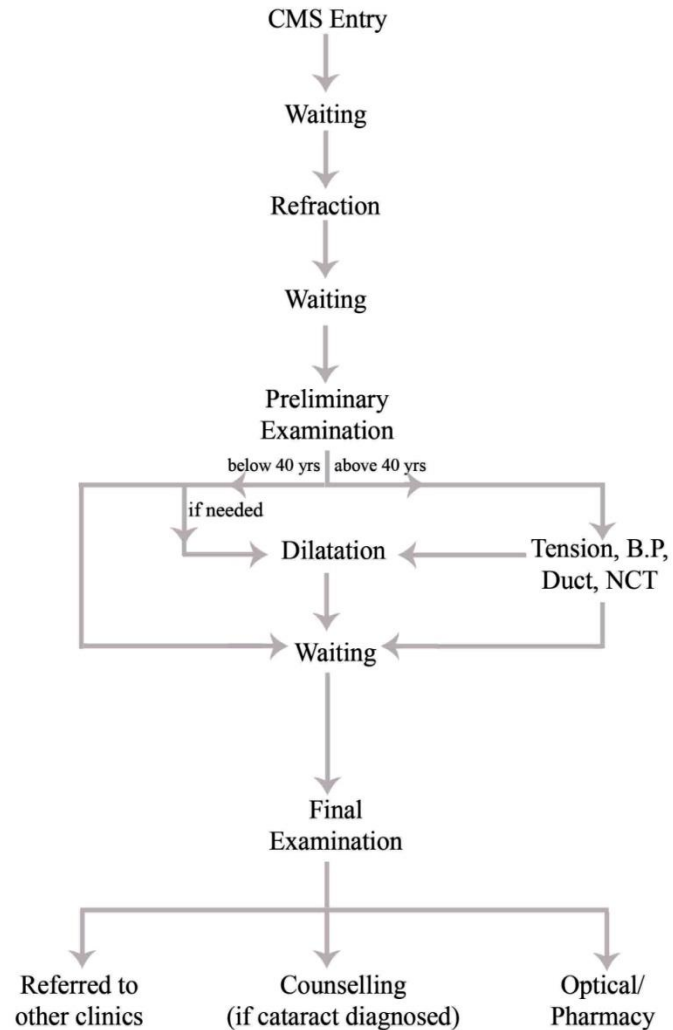




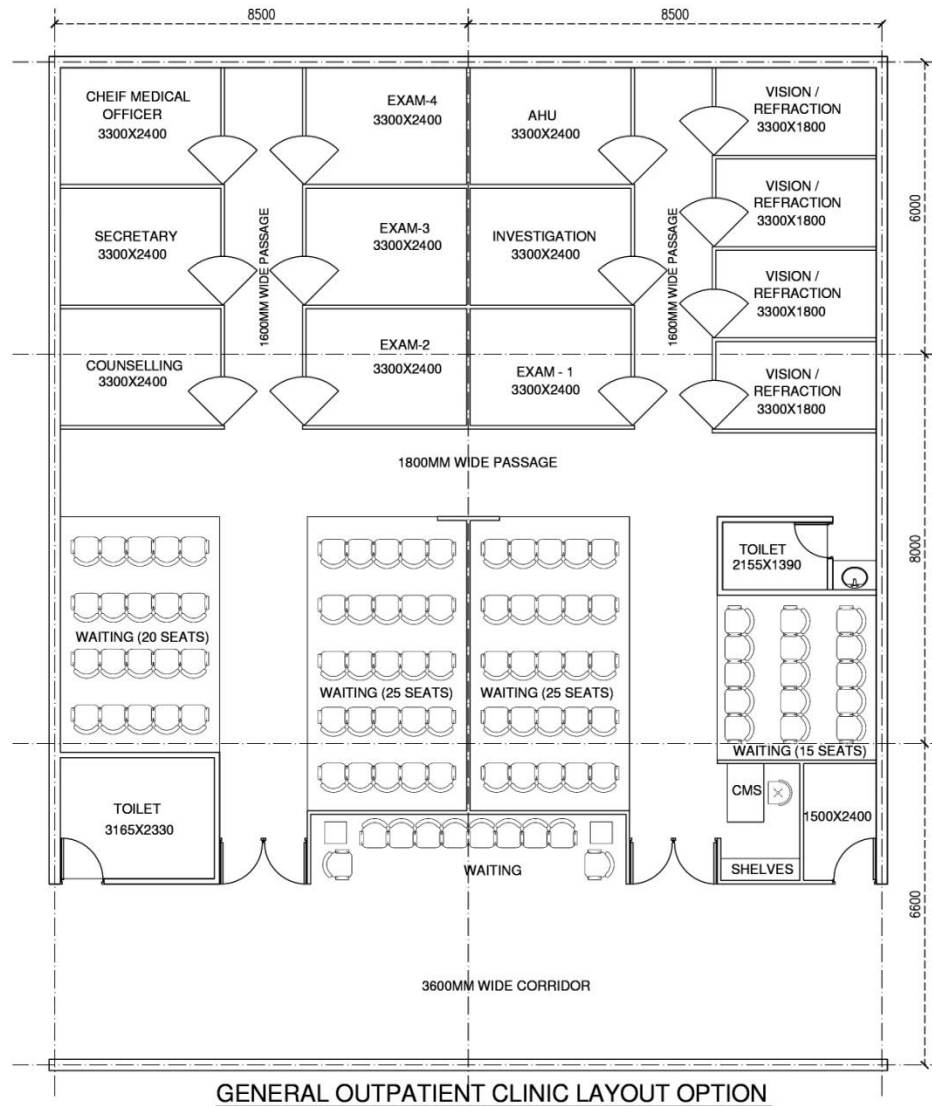




## General Ophthalmology Unit Patient Flow (within the clinic)



## PATIENT FLOW OF GENERAL CLINIC IN ARAVIND

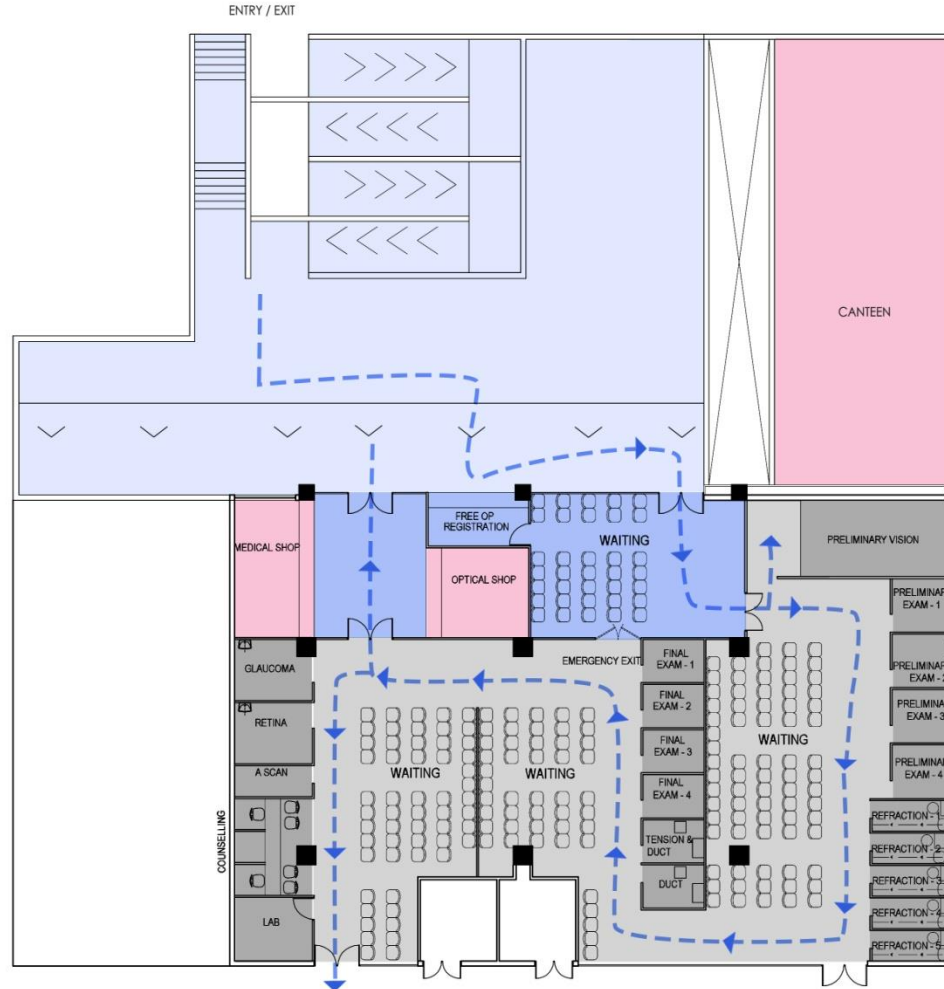


## SCHEMATIC LAYOUT OF A GENERAL CLINIC



# ARAVIND EYE HOSPITAL - CHENNAI

## - FREE OUTPATIENT CLINIC



ARAVIND EYE HOSPITAL - CHENNAI

## Checklist : Outpatient services : Clinical Areas for major Eye care specialities

Sl.no	Room Name	Dimension (L X B) in M	Area in sq.M	Description	General Out-patient	Paediatric Speciality	IOL / Catract Speciality	Glaucoma Speciality	Uvea Speciality	Cornea Speciality	Retina Speciality	Orbit Oculopalsty and Oncology Speciality	Vision rehabilitation Speciality	Neuro Speciality	Contact Lens Speciality
1	Standard Exam room	2.4 x 3.3	7.92	Used for preliminary and final examination of the patient's eye	✓		✓	✓	✓	✓	✓	✓	✓	✓	✓
2	Vision Room	1.8 x 3.3	5.94	Check the eye's ability to detect fine details and the quantitative measure of the eye's ability to see an in-focus image at a certain distance.	✓	✓	✓	✓	✓	✓	✓	✓	✓	✓	✓
3	Refraction room	1.8 x 3.3	5.94	To measure the refractive error, or vision problem	✓	✓	✓	✓	✓	✓	✓	✓	✓	✓	✓
4	Investigation room	2.4 x 3.3	7.92	Check the vital sciences and Non Contact Tonometry	✓	✓	✓	✓	✓	✓	✓	✓	✓	✓	
5	Counselling Room	2.4 x 3.3	7.92	Post final examination counselling	✓	✓	✓	✓	✓	✓	✓	✓	✓	✓	✓
6	Multipurpose room	2.4 x 3.3	7.92	Vision, refraction, NCT and center field vision examination	✓	✓									
7	Squint Examination Room	2.4 x 3.3	7.92	Paediatric eye examinators		✓									
8	Paediatric exam	2.4 x 3.3	7.92	Used for preliminary and final examination of the paediatric patient's eye		✓									
9	Haes Diplopia room	x	0	Paediatric eye examinators		✓									
10	YAG Cap room	2.4 x 3.3		Laser procedure			✓								
11	Manual biometry room	1.8 x 3.3	5.94	Keretometer, A Scan			✓								
12	HFA room	1.5 x 3.3	4.95	Humphrey field / nerve fibre analyzer examination				✓							
13	HRT room	1.5 x 3.3	4.95	Heildberg retinal tomography				✓							

## OUTPATIENT SERVICES CHECKLIST

Sl.no	Room Name	Dimension (L X B) in M	Area in sq.M	Description	General Out-patient	Paediatric Speciality	IOL / Catract Speciality	Glaucoma Speciality	Uvea Speciality	Cornea Speciality	Retina Speciality	Orbit Oculopalsty and Oncology Speciality	Vision rehabilitation Speciality	Neuro Speciality	Contact Lens Speciality
14	Yag Pi Laser	2.4 x 3.3	7.92	Laser procedure				✓							
15	I&D room	1.5 x 3.3	4.95	Incision of drainage					✓						
16	Duct, scrapping and pachy room	1.5 x 3.3	4.95	Pre examination procedure						✓					
17	Specular Microscopy	1.8 x 3.3	5.94	Scan for eye examination						✓					
18	Zywave, Orbscan room	2.4 x 3.3	7.92	Examination for lasik procedure						✓					
19	Pentacom room	1.8 x 3.3	5.94	Scan for eye examination						✓					
20	Confocal room	1.8 x 3.3	5.94	Scan for eye examination						✓					
21	CCT room	x	0	Central Corneal Thickness examination room						✓					
22	OCT room	1.5 x 3.3	4.95	Anterior OCT retina examination							✓				
23	FFA room	2.4 x 3.3	7.92	Fundus flouresence angiography laser procedure							✓				
24	USG and UBM	3 x 3.3	9.9	Ultrasonography examination							✓				

## OUTPATIENT SERVICES CHECKLIST

Sl.no	Room Name	Dimension (L X B) in M	Area in sq.M	Description	General Out-patient	Paediatric Speciality	IOL / Catract Speciality	Glaucoma Speciality	Uvea Speciality	Cornea Speciality	Retina Speciality	Orbit Oculopalsty and Oncology Speciality	Vision rehabilitation Speciality	Neuro Speciality	Contact Lens Speciality
25	ERG room	x	0	Electro retinogram							✓				
26	ERG recovery room	x	0	Recovery room for Electro retinogram							✓				
27	ROP room	x	0	Retina of Paediatric patients, seprerate waiting area for paediatric patients.							✓				
28	Dilatation area	x	0	Waiting area post dilatation							✓				
29	Typical laser room for retina	x	0	Laser procedure							✓				
30	Nasal Passage Room / Suture removal room	1.5 x 3.3	4.95	Lacrymal examination								✓			
31	Ocular Prosthetic	3.3 x 3.6	11.88	False eye installation procedure								✓			
32	Aesthe Clinic	x	0	Cosmetic procedure								✓			
33	Oncology/ Trauma clinic	x	0	For cancer and trauma patients								✓			
34	Low vision assesement room	1.5 x 3.3	4.95	Examination and evaluation procedure									✓		
35	Vision Stimulation room	2.4 x 3.3	7.92	Examination and evaluation procedure									✓		

## OUTPATIENT SERVICES CHECKLIST



## Checklist : Outpatient Services : Clinical room wise requirements

Sl. no	Room Name	Equipment / Machine												Procedure Requirements						Furniture										
		Slit Lamp	Direct Ophthalmoscope	Electric Torch	Indirect Ophthalmoscope	Projector & Display	Refraction Table	NCT Machine	IOP Machine	Streak retinoscope	RAF ruler	Microscope	Fundus Camera	Computer + Printer	Wash Basin	Ceiling light	Wall mounted light	Dimmer	Temperature and humidity control	Recovery for GA patients	Attender's Chair	Patient's chair	Patient's stool	Patient's couch / bed	Examiner's chair	Examiner's stool	Examiner's table	Storage Shelf	Others (Mention)	
1	Standard Exam room	✓	✓	✓	✓									✓	✓		✓				✓		✓		✓		✓			
2	Vision Room			✓		✓	✓		✓	✓					✓	✓	✓					✓		✓		✓		✓		
3	Refraction room			✓		✓	✓		✓	✓					✓	✓						✓		✓		✓		✓		
4	Investigation room			✓				✓	✓						✓							✓	✓	✓				✓		
5	Multipurpose room (*Bejerrum screen)			✓		✓	✓		✓	✓					✓	✓						✓		✓		✓		✓		
6	Counselling room												✓		✓						✓	✓			✓		✓		✓	
7	Squint Examination Room (* Synoptophore, Triangle table, Loose prism)			✓		✓			✓	✓					✓	✓					✓	✓		✓		✓		✓		
8	Paediatric exam	✓	✓	✓	✓	✓			✓					✓	✓		✓				✓		✓	✓	✓	✓	✓	✓		
9	Haes Diplopia room (*Perimetry, Haes chart)														✓						✓		✓		✓		✓		✓	
10	YAG Cap room (* Yag laser machine)													✓	✓		✓		✓		✓		✓		✓		✓		✓	
11	Manual biometry room (*IOL Master, Kerotometer)												✓	✓	✓		✓		✓		✓	✓		✓	✓	✓	✓	✓		
12	HFA room (*HFA Machine)												✓		✓		✓		✓		✓	✓		✓		✓		✓		
13	HRT room (*HRT Machine)												✓		✓	✓	✓		✓		✓		✓		✓		✓		✓	
14	Yag Pi Laser (*Yag Pi laser machine)														✓		✓		✓		✓	✓	✓	✓	✓	✓		✓		
16	Duct, scrapping and pachy room				✓									✓	✓		✓				✓	✓	✓	✓	✓		✓		✓	
17	Specular Microscopy												✓		✓	✓					✓		✓		✓		✓		✓	
18	Zywave, Orbscan room (*Zywave Orbscan)												✓	✓	✓		✓		✓		✓	✓		✓		✓		✓		
19	Pentacom room (*Pentacom machine)												✓		✓		✓		✓		✓		✓		✓		✓		✓	
20	Confocal room (*confocal machine)												✓		✓		✓		✓		✓		✓		✓		✓		✓	
21	CCT room (*CCT Machine)												✓	✓	✓						✓		✓		✓		✓		✓	
22	OCT room (*OCT machine)												✓	✓	✓						✓		✓		✓		✓		✓	
23	FFA room (*Topcon Zeiss, Stretcher)												✓	✓		✓		✓			✓		✓	✓	✓	✓	✓	✓	✓	
24	USG and UBM (*Ultra sonography)												✓	✓	✓				✓		✓		✓	✓	✓	✓	✓	✓	✓	
25	ERG room (*ERG machine. Cylinder oxygen, Crash cart)												✓		✓		✓		✓		✓		✓	✓	✓	✓	✓	✓	✓	
26	ERG Recovery room														✓				✓		✓		✓		✓		✓		✓	
27	ROP room														✓						✓		✓		✓		✓		✓	
28	Dilatation area														✓						✓		✓		✓		✓		✓	
29	Typical laser room for retina (* Recommended laser machine)												✓	✓	✓		✓		✓		✓	✓	✓	✓	✓	✓	✓	✓	✓	
30	Nasal Passage Room / Suture removal room													✓	✓	✓					✓		✓	✓	✓	✓				
31	Ocular Prosthetic													✓	✓						✓		✓		✓		✓		✓	
32	Aesthe Clinic														✓						✓		✓		✓		✓		✓	
33	Oncology/ Trauma clinic	✓	✓	✓	✓									✓	✓						✓		✓		✓		✓		✓	
34	Low vision assesement room (*LCD Screen)												✓	✓	✓		✓				✓		✓		✓		✓		✓	
35	Vision Stimulation room (*LCD Screen)												✓	✓	✓		✓				✓		✓		✓		✓		✓	

## OUTPATIENT SERVICES CHECKLIST

## OPD - Master Equipment checklist

Sl.no	Equipment	Size / Footprint	Watts	Amperage		Supply			Water Connection	Others (Mention)
				5A	15A	General	Stabilised	Uninterrupted		
1	Slit Lamp		100	Y		O - 1		O - 2		
2	Electric Torch		20	Y		O - 1		O - 2		
3	Direct Ophthalmoscope		100	Y		O - 1		O - 2		
4	Indirect Ophthalmoscope		100	Y		O - 1		O - 2		
5	Hand held Slit lamp		70	Y		O - 1		O - 2		
6	CT Scan -Viewer		100	Y		O - 1		O - 2		
7	Auto Refractor		75	Y		O - 1		O - 2		
8	Ophthalmic Chart Projector			Y		O - 1		O - 2		
9	Ophthalmic Chart Display		100	Y		O - 1		O - 2		
10	Refraction Table			Y		O - 1		O - 2		
11	NCT Machine		80	Y				Y		
12	IOP Machine		100	Y				Y		
13	Center field exam display board							Y		
14	IOP Machine		100	Y				Y		
15	Streak retinoscope		10	Y				Y		
16	Aurochart		50	Y		O - 1				
17	RAF ruler		0	Y				Y		
18	Retinamax		6 v	Y				Y		
19	IOL Master		600		Y			Y		
20	Kerotometer		15	Y				Y		
21	HFA Machine		210	Y				Y		
22	HRT Machine		1500		Y			Y		
23	OCT Machine		1500		Y			Y		
24	DCT Machine		1500		Y			Y		
25	Fundus camera		1750w /200 V		Y			Y		
26	Boyles Apparatus		0	Y				Y		
27	Zywave Orbscan		1500		Y			Y		
				Y						

## OUTPATIENT SERVICES CHECKLIST

## OPD - Master Equipment checklist

Sl.no	Equipment	Size / Footprint	Watts	Amperage		Supply			Water Connection	Others (Mention)
				5A	15A	General	Stabilised	Uninterrupted		
28	Wash Basin			Y						
29	Ceiling Fan		80	Y						
30	Ceiling Light (mention lighting levels)		72	Y		200-300-500 (Range of Service Illuminance)				
31	Dimmer		0							
32	Temperature control (Mention type of air conditioning if needed)		0							
33	Humidity control		0							
34	Piped oxygen		0							
35	Cylinder oxygen		0							
36	Crash cart		0							
37	Compulsory wheelchair access									
38	Recovery for GA patients									
39	Wall mounted TV		150			Y				
40	Computer - Screen							Y		
41	Computer - CPU		300					Y		
42	Printer		80					Y		
43	Data - Internet							Y		
44	Data - Telephone							Y		
45	Attender's Chair									
46	Patient's chair									
47	Patient's stool									
48	Patient's couch / bed									
49	Examiner's chair									
50	Examiner's stool									
51	Examiner's table									
52	Examiner's cupboard									
	<b>Others (Mention)</b>									
	Equipments for the following rooms :									
	ERG and ERG recovery,ROP room,									
	Typical laser for retina, Oncology									
	trauma clinic, Aesthe clinic, Vision									
	room for vision rehabilitation speciality									

## OUTPATIENT SERVICES CHECKLIST